



## West Halkin Street, Knightsbridge, SW1X

### £15,750,000

A rare and magnificent white stucco fronted freehold house located in the heart of Belgravia. This Grade II Listed Building is spread over six floors and includes 8 bedrooms, 7 bathrooms, 3 reception rooms, study, drawing room, eat-in kitchen, mezzanine level and 2 further kitchens. It also features a south facing first floor balcony and sauna.

### Key Features

- Stucco Fronted Town House
- Arranged over 6 Floors
- 8 Bedrooms
- 7 Bathrooms
- 3 Reception Rooms
- 3 Kitchens
- Study & Drawing Room
- Sauna
- South Facing First Floor Balcony
- Modern Mezzanine Level
- Development Potential
- 7064 Approx sq ft (656.3 sq m)

West Halkin Street, Knightsbridge, SW1X  
£15,750,000



Many of the rooms retain much of their original décor features including high ceilings with beautifully detailed coving and ceiling roses; picture rails and traditional fire surrounds in several rooms together with traditional sash windows throughout most of the building. The top floor has also been redecorated to a more modern style with a glass balustrade leading up to the mezzanine above.

With 7064 sq ft (656.3 sq m) floor area (excluding lightwells, low ceilings and external vaults) the property offers fantastic value for the size and can be lived in as a single substantial house or has the potential to be developed in several luxury apartments.



West Halkin Street is an extremely desirable London address located just off Belgrave Square and only a few moments from the designer shops, popular restaurants and exclusive bars Knightsbridge has to offer. The nearby Knightsbridge and Hyde Park Corner underground stations also offer easy access to the rest of London. Viewing is highly recommended.

Tenure: Freehold.





West Halkin Street, Knightsbridge, SW1X  
£15,750,000



West Halkin Street, Knightsbridge, SW1X  
£15,750,000





West Halkin Street, Knightsbridge, SW1X  
£15,750,000



West Halkin Street, Knightsbridge, SW1X  
£15,750,000



West Halkin Street, Knightsbridge, SW1X  
£15,750,000



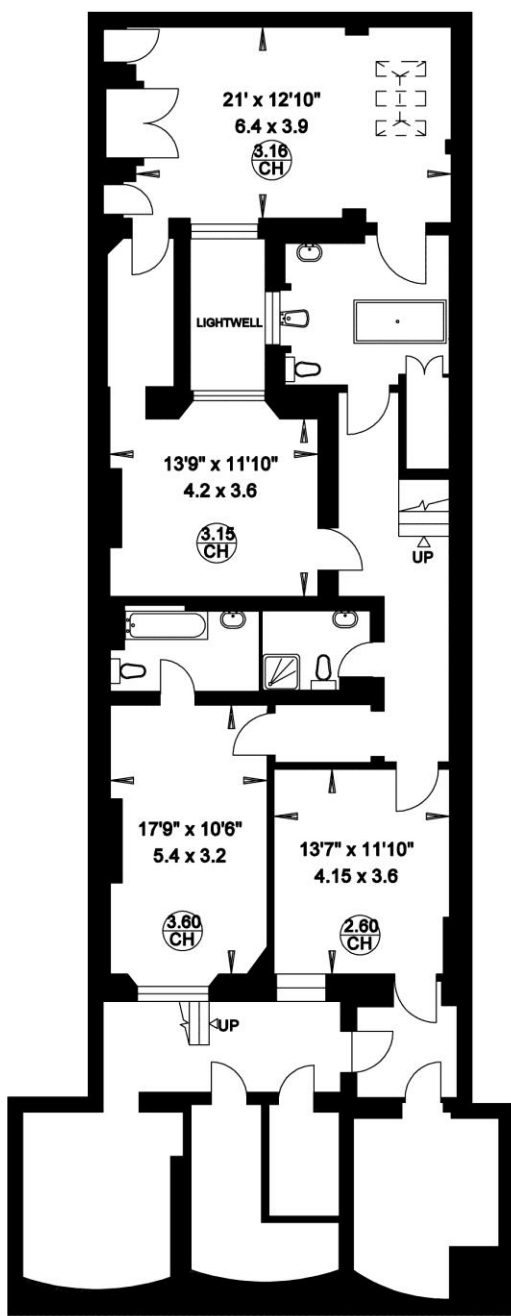


West Halkin Street, Knightsbridge, SW1X  
£15,750,000

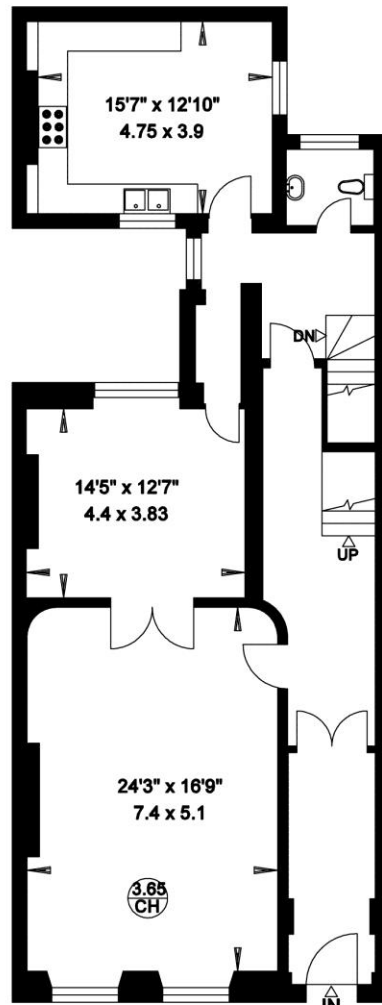
**WEST HALKIN STREET  
LONDON W1**

Gross Internal Area = 656 sq. metres  
7064 sq. feet

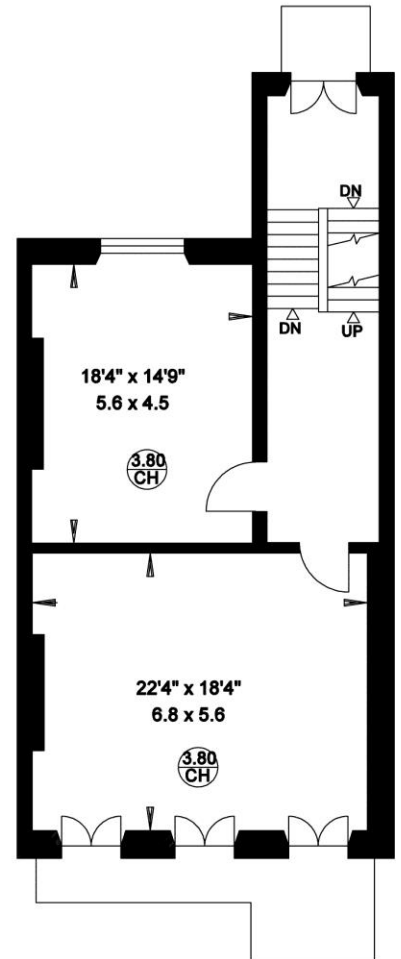
(Excluding Lightwell, Low Heights & External Vaults)



LOWER GROUND FLOOR



GROUND FLOOR



FIRST FLOOR

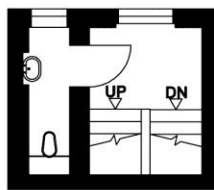


West Halkin Street, Knightsbridge, SW1X  
£15,750,000

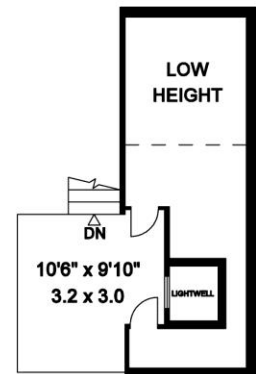
**WEST HALKIN STREET  
LONDON W1**

Gross Internal Area = 656 sq. metres  
7064 sq. feet

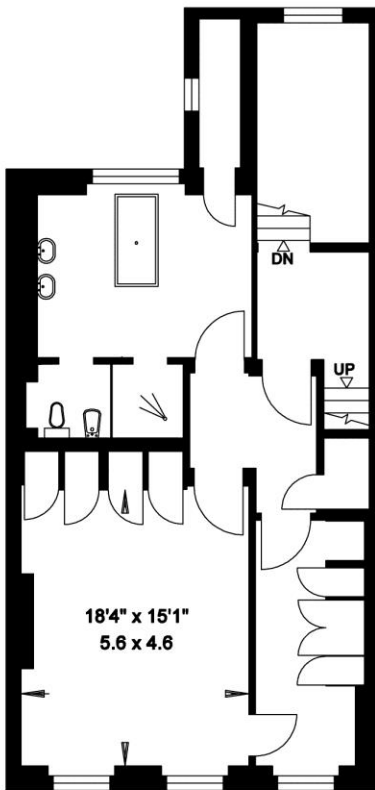
(Excluding Lightwell, Low Heights & External Vaults)



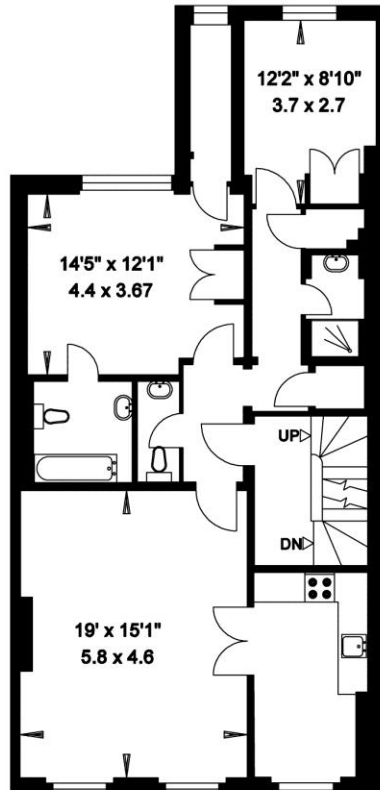
SECOND FLOOR



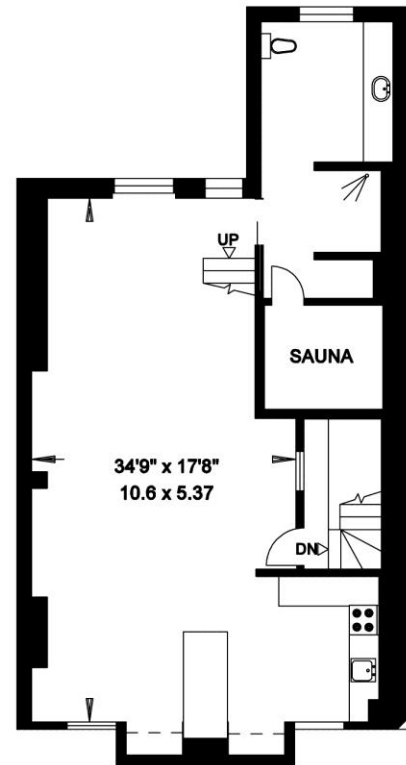
MEZZANINE



SECOND FLOOR



THIRD FLOOR



FOURTH FLOOR